



1. Remove 3 x flat head screws on top.



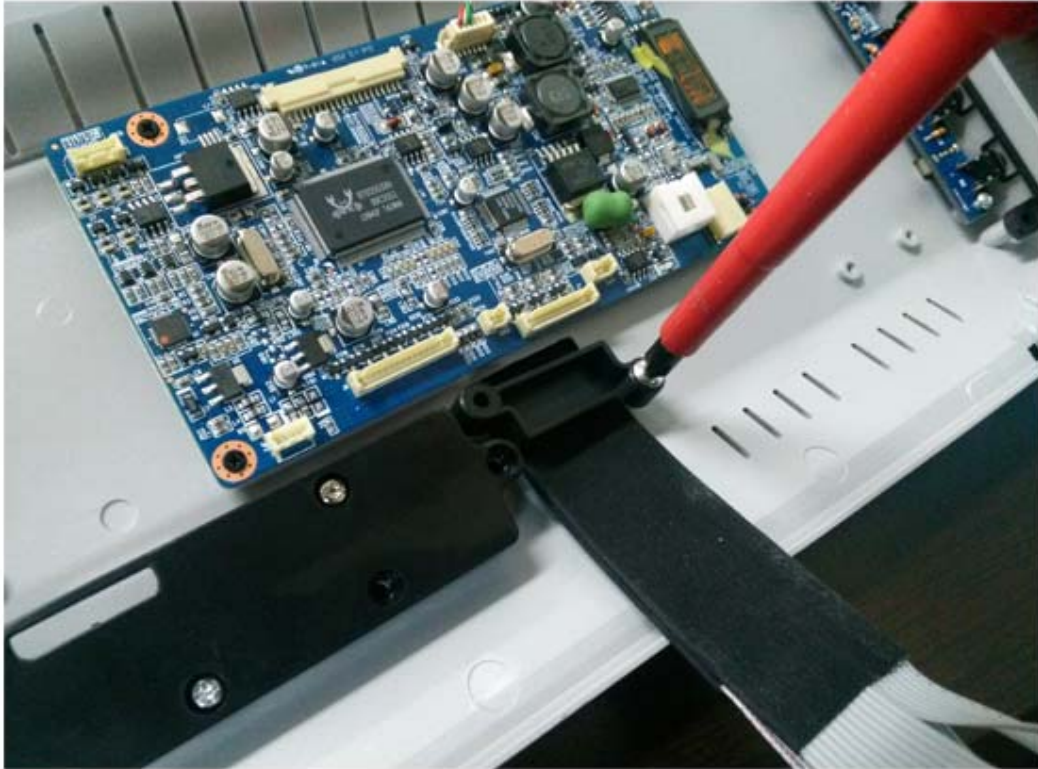
2. Remove 3 x round head screws on bottom.



3. Remove 4 x round head screws on each side.



4. Remove front aluminum bezel as like picture.
And front aluminum bezel might be bended,
remove it very carefully.
Then can take out tft-LCD panel.



5. Please fix two ribbon cable with black plastic part.



6. Manage cable like a pictur and assemble in reverse order.

Thanks.