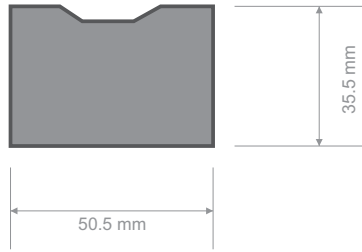
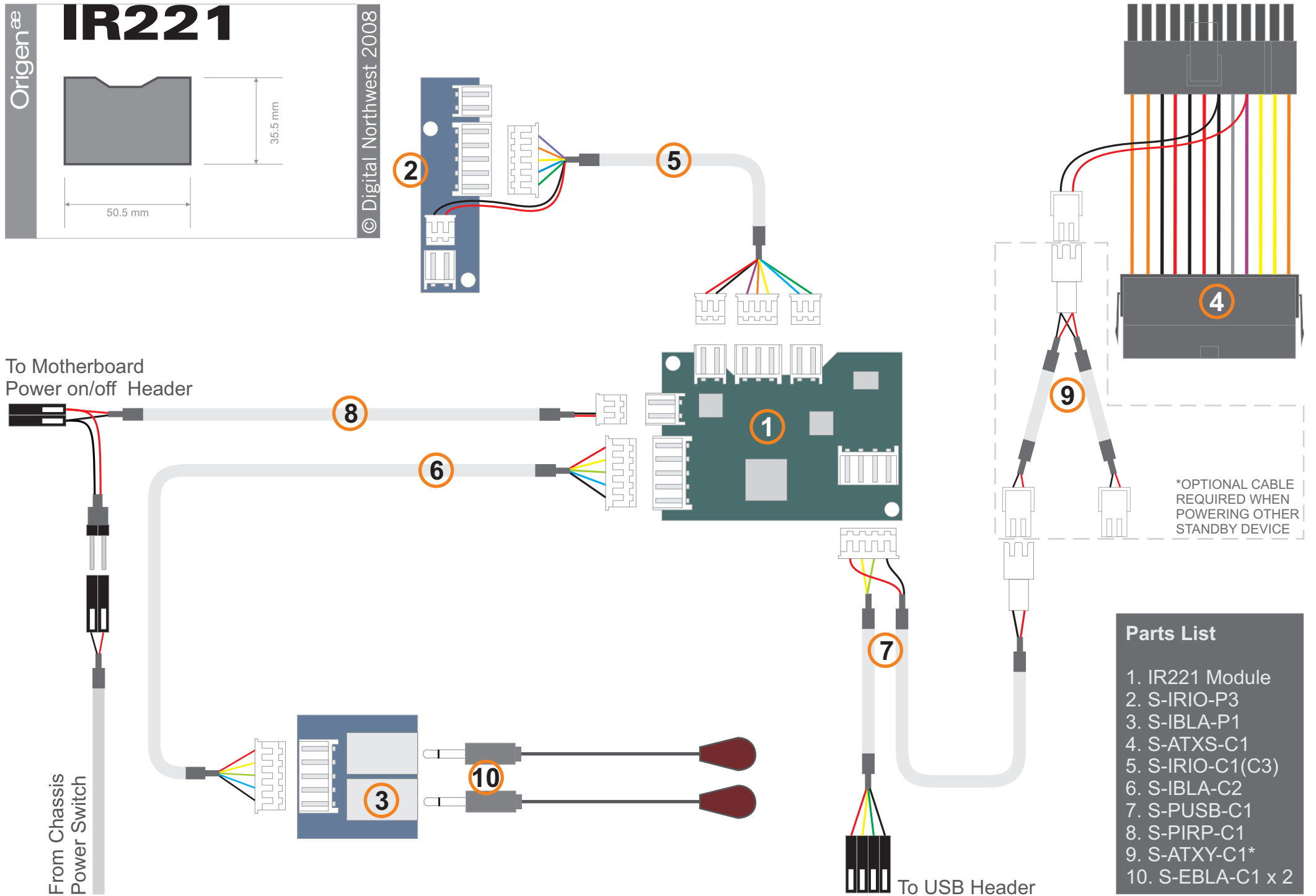


IR221



To Motherboard
Power on/off Header



*OPTIONAL CABLE
REQUIRED WHEN
POWERING OTHER
STANDBY DEVICE

Parts List

1. IR221 Module
2. S-IRIO-P3
3. S-IBLA-P1
4. S-ATXS-C1
5. S-IRIO-C1(C3)
6. S-IBLA-C2
7. S-PUSB-C1
8. S-PIRP-C1
9. S-ATXY-C1*
10. S-EBLA-C1 x 2

From Chassis
Power Switch

To USB Header