

Operator's manual

Make life colorful



eHDD

Thank you for purchasing WESENA's HTPC Chassis. We recommend that you read this user guide thoroughly before installation.

WESENA is the professional global supplier of HTPC cases, we hold the professional product designing, the novel and fashionable outside looking , humanistic inner structure of it ,high-quality QC management and high-quality production team. At the same time we are on the line of providing the high quality products constantly , and will never stop innovating and improving the theory of development in HTPC case . The products, Both OEM and ODM are welcomed.

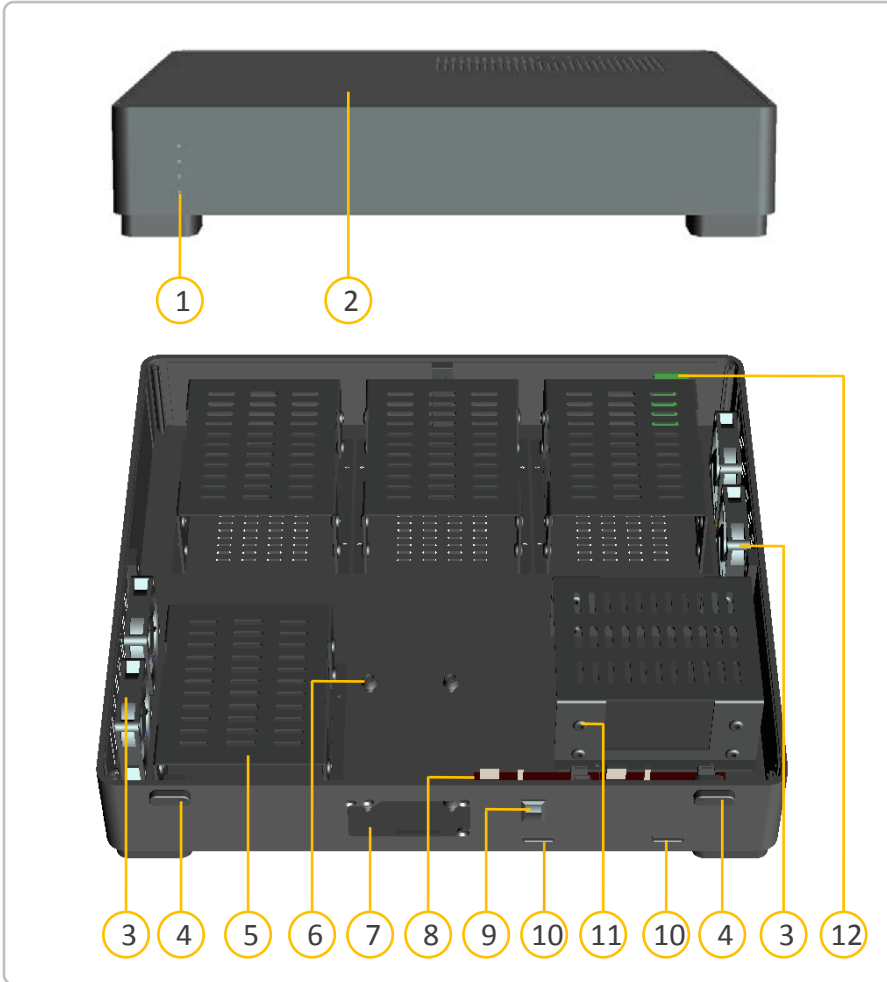
More information of our products visit <http://www.wesena.com>
Any other question please make call 400 6088 126

WESENA is not responsible for any damages due to external causes, including but not limited to, improper use, problems with electrical power, accident, neglect, alteration, repair, improper installation or improper testing.

Index

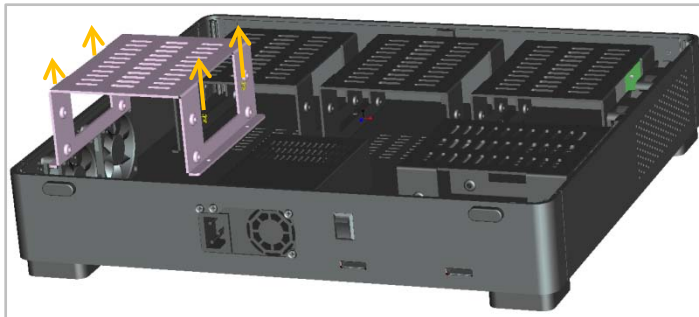
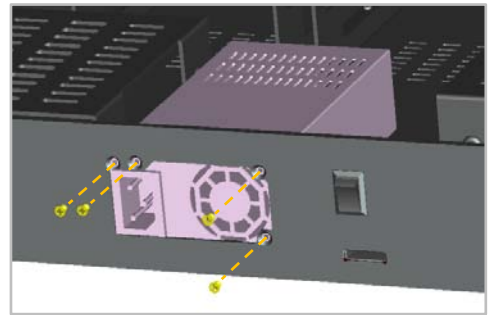
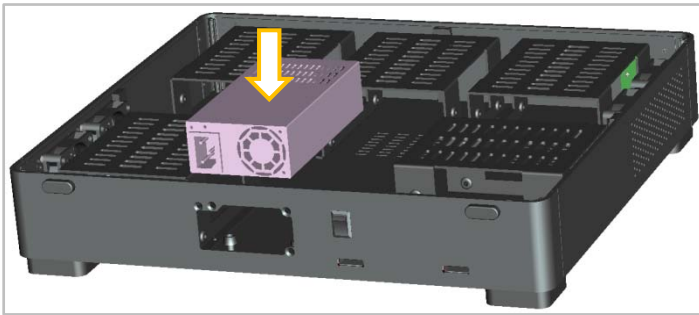
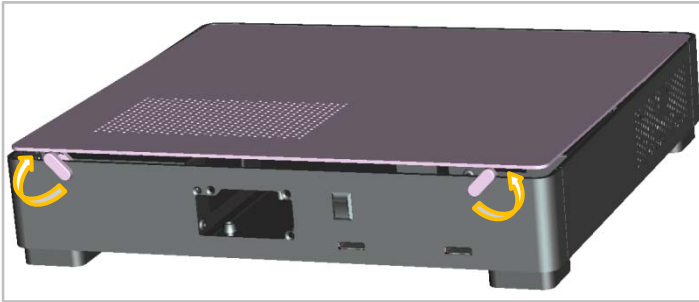
eHDD overview-----	4
Open the Top panel-----	5
PSU installation -----	5
HDD installation-----	5
Close the Top panel-----	7
PCB+cables reference diagram -----	8

eHDD overview



- ①. Operating indicator light
- ②. TOP panel
- ③. 60x60x15mm fan
- ④. Top plate open handling
- ⑤. HDD bracket
- ⑥. power anti-vibration pad
- ⑦. Power position
- ⑧. eSATA board
- ⑨. power switch
- ⑩. eSATA connector
- ⑪. HDD anti-vibration circle
- ⑫. LED

Model:	eHDD
Material:	100% full Aluminum
Color:	Silver / black / Gold
HDD drive bay:	10×3.5"HDD drive bay
Cooling:	2×60×60×15mm ultra-quiet fans+2×60×60×15mm fans bay
eSATA board bay:	2× eSATA board bay
Interface port:	2× Standard eSATA port
Dimension:	435mm×390mm×70mm (L×W×H)
Power Supply:	Flex ATX PSU bay
Net Weight:	5KG



Top plate opening

Rotate top plate open handling, open the top plate , and take out the top plate

[Shown as photos](#)

Power installment

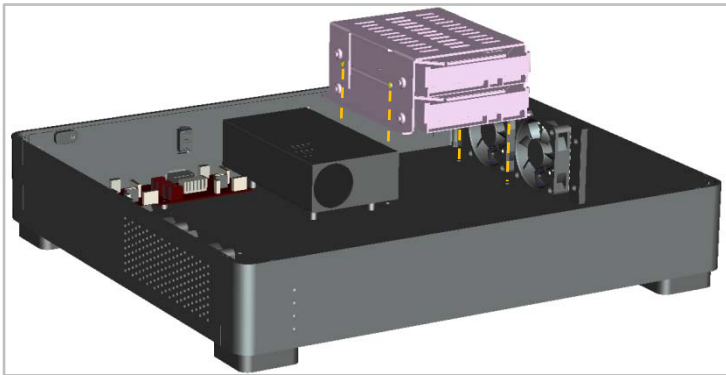
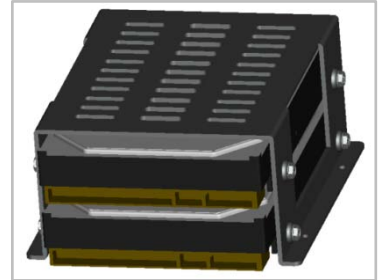
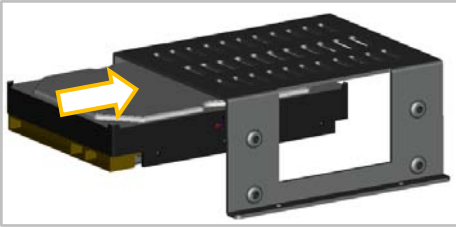
Put the power into the case , and alignment holes , lock the screws.

[Shown as photos](#)

HDD installment

Take off HDD bracket screws, and take out the HDD bracket

[Shown as photos](#)

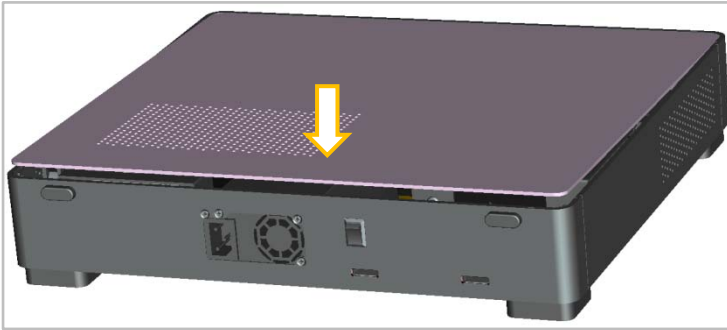


Take out the 3.5inch HDD, and put the HDD into the bracket, lock the screws (shown as photos)

Put the bracket with HDD into the chassis

Shown as photos





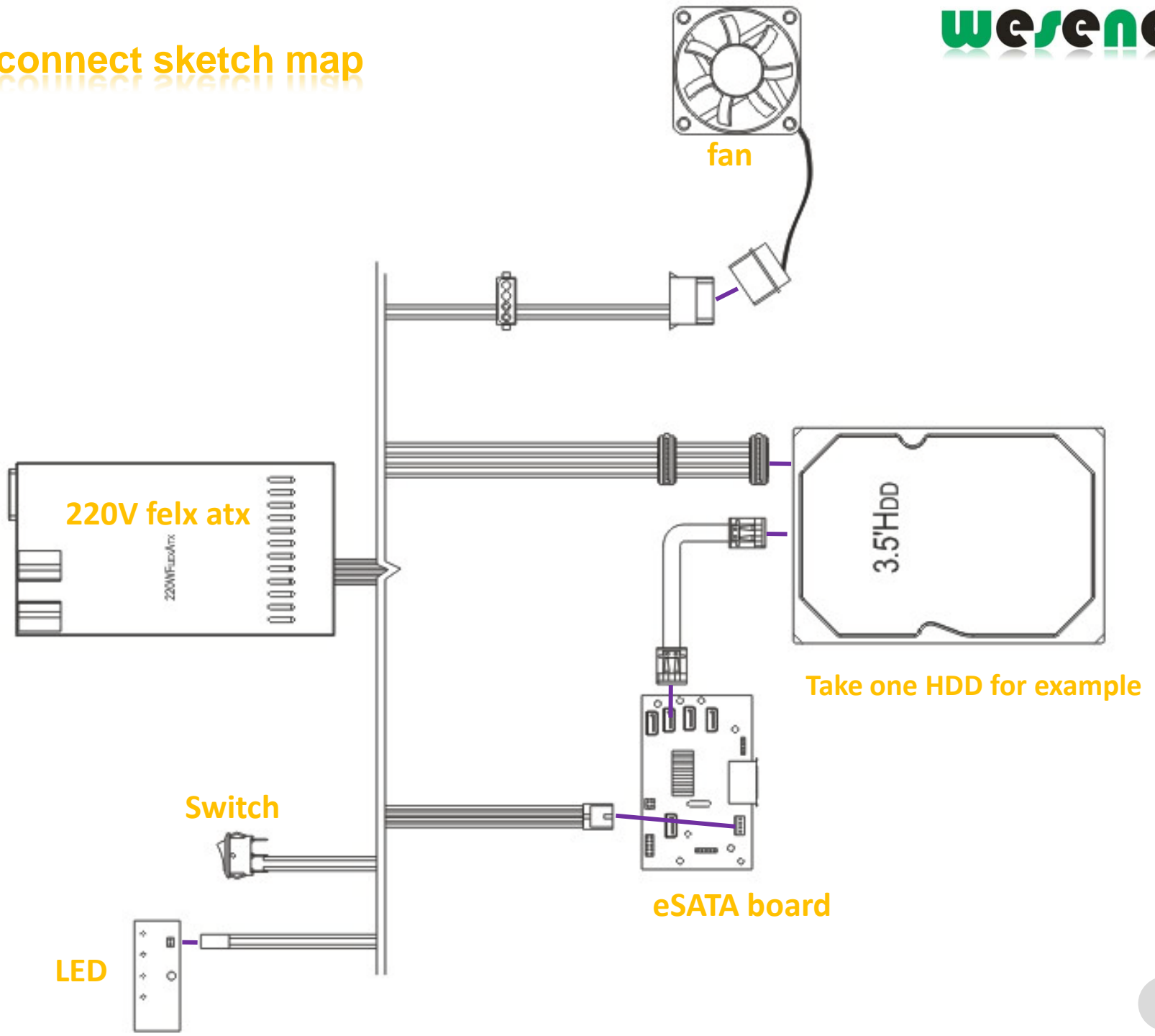
Top plate covering

To connect all the electronic components according to the power connect drawing

After finished the inner installment, recheck the installment place and the line connect, and then cover the top plate

Shown as photos

Cables connect sketch map



Add: No. 809 8F A Area, Huameiju
Business Center, Xihu Rd, Block
82 Baoan District Shenzhen, China
518102

Tel: +86 755 29193778 400 6088 126
Fax: +86 755 23494915
E- mail: info@wesena.com
<http://www.wesena.com>

